



ELI3

Torque wrenches:
Coppie di serraggio:



80 ± 4 Nm

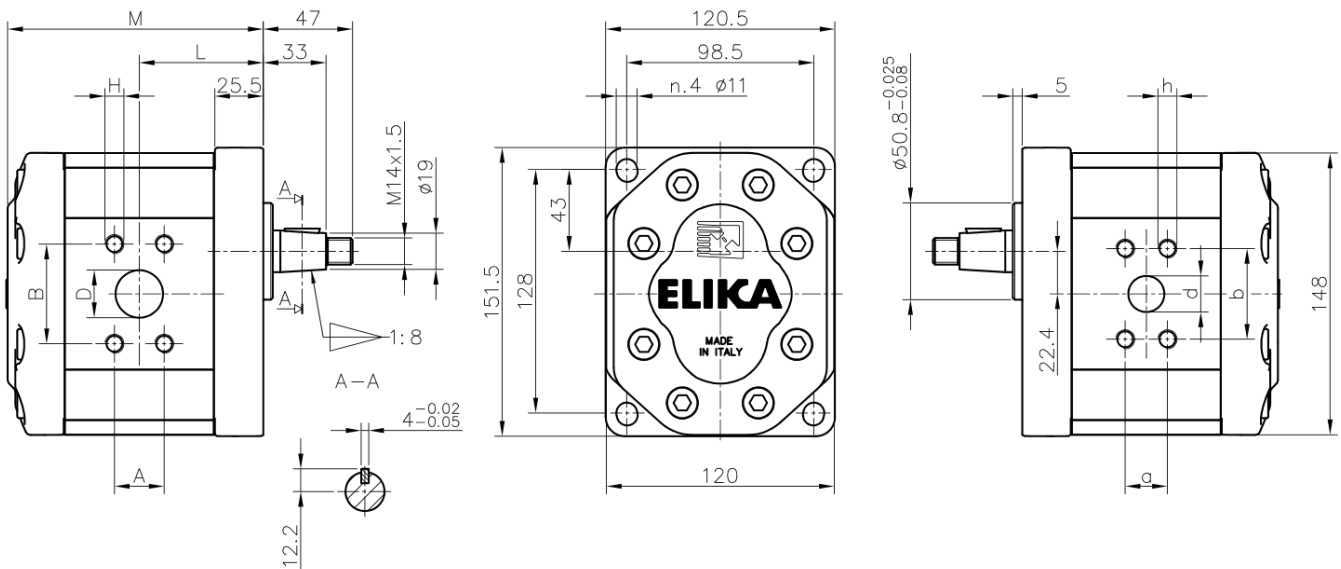
M10 screws 30 Nm
M12 screws 40 Nm
Viti M10 30 Nm
Viti M12 40 Nm

Accessories supplied with the standard pump:
woodruff key (code 522058), M14 x 1.5 hexagonal
nut (code 523017), washer (code 523006). Stand-
ard ports: M10, M12 threads depth 20 mm.

Parti accessorie a corredo della pompa standard:
linguetta a disco (codice 522058), dado M14x1.5
(codice 523017), rosetta elastica spaccata (codice
523006). Porte standard: filetti M10, M12 profondi-
tà utile = 20 mm.

ASPIRAZIONE
INLET

MANDATA
OUTLET



Pump Type <i>Pompa tipo</i>	Displ. <i>Cilindr.</i>	Flow at 1500 rpm <i>Portata a 1500 rpm</i>	Operating pressures <i>Pressioni operative</i>			Rotation speed <i>Velocità di rotazione</i>		Noise at 1500 rpm* <i>Rumorosità a 1500 rpm</i>		Dimensions <i>Dimensioni</i>					
			P1 Max cont.	P2 Max intermitt.	P3 Max peak	Minimum speed	Maximum speed	On recirc.	at P1	L	M	D	A / B	d	a / b
	[cm ³ /rev]	[l/min]	[bar]	[bar]	[bar]	[rpm]	[rpm]	[dBA]	[dBA]	[mm]	[mm]	[mm]	[mm]	[mm]	[mm]
ELI3-D-20.4	20.4	30.7	280	295	310	300	3500	49	59	64.3	129.5	25	26.2 / 52.4	19	22.2 / 47.6
ELI3-D-21.6	21.6	32.4	280	295	310	300	3500	49	59	64.3	130.5	25	26.2 / 52.4	19	22.2 / 47.6
ELI3-D-26.3	26.3	39.4	280	295	310	300	3500	49	59	65.3	134.5	25	26.2 / 52.4	19	22.2 / 47.6
ELI3-D-33.3	33.3	50.0	270	285	300	300	3500	50	60	71.3	140.5	31	30.2 / 58.7	25	26.2 / 52.4
ELI3-D-39.1	39.1	58.7	260	275	290	300	3500	50	60	72.8	145.5	31	30.2 / 58.7	25	26.2 / 52.4
ELI3-D-43.2	43.2	64.8	250	265	280	200	3500	51	61	74.0	149.0	31	30.2 / 58.7	25	26.2 / 52.4
ELI3-D-52.0	52.0	78.0	230	245	260	200	3500	51	61	80.8	156.5	34	35.7 / 69.9	25	26.2 / 52.4
ELI3-D-60.8	60.8	91.1	210	225	240	200	3300	51	62	84.5	164.0	34	35.7 / 69.9	25	26.2 / 52.4
ELI3-D-64.3	64.3	96.4	210	225	240	200	3200	51	62	86.0	167.0	34	35.7 / 69.9	25	26.2 / 52.4
ELI3-D-70.7	70.7	106.0	200	215	230	200	2900	52	63	94.8	172.5	38	35.7 / 69.9	25	26.2 / 52.4
ELI3-D-78.3	78.3	117.4	180	195	210	200	2600	52	63	99.0	179.0	38	35.7 / 69.9	25	26.2 / 52.4
ELI3-D-87.1	87.1	130.6	160	175	190	200	2400	52	63	103.8	186.5	38	35.7 / 69.9	25	26.2 / 52.4